



Classic Pumps

www.classicpumps.com

*Simplicity,
Elegance & Comfort*

Classic Pumps are designed and custom manufactured in Spain by world renowned shoe designers Pepe Jimenez and Sergio Zelcer. Until now they have been available only in expensive shoe boutiques.

Shoe uppers are made from buttery soft kidskin leather, as are the inside of the shoe and sock lining. Heels are reinforced internally with a metal rod to resist breakage. The inner heel is lined in suede to prevent your foot from slipping as you walk.

Spanish Leather

Designed by Sergio Zelcer

*New Pepe Jimenez Styles
Revealing "cut-out" toebox styles, sexy
straps, curvy heels, & delicate bows.
See inside for details!*

New!

*New! Sexy Lola
is now available in
even more colors!*



Bella



Anna

Anna and *Bella* are classic styles that are perfect for work or play. The *Anna* (high) sits atop a 4" spiked heel that tapers to 1/4" at the heel base. The *Bella* (mid) features a slightly curvy 3" heel that tapers to 1/2" at the heel base, mirroring today's heel fashion while retaining the classically thin mid-heel appearance.

The low-cut vamp on both styles features a rolled edge design that allows your foot to slide easily into the shoe without snagging your hose on loose threads. The suede leather heel

lining cradles your heel while preventing slippage. If you prefer "a little more shoe" to cover the sides of your feet, the Spanish Leather *Anna* or *Bella* styles are the ones to choose.

Sizes: B or medium width only
4 through 11, no size 10 1/2

Sizes 10 & under \$85
Sizes over 10 \$95

Note: The new Per Lei factory producing Spanish Leather styles allows us to provide you with better delivery (fewer backorders). Some shoes will be labeled *Spanish Leather*, others will be labeled *Per Lei*.



Heel Height & Color Chart

Style	Heel Height	Colors
<i>Bella</i>	3-inch	Black Kid, Black Patent, Navy, Red, White
<i>Anna</i>	4-inch	Black Kid, Black Patent, Bone, Fuchsia, Navy, Red, White

Questions?

Call us from 9 AM to 5 PM CT

Fax us 24 hours a day

Visit our Web site

630-385-2047

630-385-2056

<http://www.classicpumps.com>

Classic Styles by Pepe Jimenez

The Pepe Jimenez styles have the same high-quality features you find in our Spanish Leather shoes, but their slightly lower-cut vamp uncovers just a bit more of your toes to give, dare we say, a sexier look?

Lola, Rossi & Nany

These styles are differentiated only by their heel height.



Lola



Rossi



Nany

Lola, with its 4" heel, is perfect for someone who wants that statuesque look and feels comfortable and confident walking in our highest heels.

If you love the Lola look but feel a lower 3½" heel would be more "walkable," then **Rossi** is the style for you.

To look your best and maximize comfort while you walk, select the **Nany** with its 2½" heel.

B (medium) width:

Sizes: 3½ through 12
Sizes 10 & under \$95
Sizes over 10 \$105

Rossi only: Sizes 13, 14, 15 in black kid and black patent ... \$109

C width (Lola & Rossi only):

Sizes 5 through 12
Sizes 10 & under \$95
Sizes over 10 \$105
(Lola & Rossi in C width, sizes 13, 14, & 15, are available in black kid only.)

See chart below for C width colors.

Heel Height & Color Chart		
Style	Heel Height	Colors
Lola	4-inch	Aqua, Black Crocodile Print, Black Kid, Black Patent, Black Satin, Black Snake, Black Suede, Bone, Camel, Chocolate Brown, Dark Green, Fuchsia, Gold, Gray, Lemon, Navy, Orange, Pastel Pink, Purple, Red, Red Patent, Royal Blue, Silver, Light Taupe, White, White Patent, Wine, Two-Tone White/Navy C width: Black Kid, Black Patent, Bone, Navy, Red
Rossi	3½-inch	Aqua, Black Crocodile Print, Black Kid, Black Patent, Black Suede, Bone, Chocolate Brown, Dark Green, Dark Gray, Navy, Purple, Red, Royal Blue, Taupe, White, Wine C width: Black Kid, Black Patent, Bone, Navy, Red
Nany	2½-inch	Black Kid, Black Patent, Bone, Navy, Red, White

Lori & Rosa



Lori

The **Lori** (4" heel) and **Rosa** (3½" heel) styles are slingback versions of our popular Lola and Rossi styles. Both styles feature our popular flex-leather sole.

Sizes: 3½ through 12,
B (medium) width only

Sizes 10 & under \$95
Sizes over 10 \$105

Gina



Gina

Gina is a sexy, low-heel version of our popular Lola and Rossi styles. The shoe features the same low-cut vamp as our pumps, leather soles and sock lining, and a comfortable walking/work heel height of 1".

Sizes: 3½ through 12,
B (medium) width only

Sizes 10 & under \$95
Sizes over 10 \$105

Lulu & Romy



Lulu

Lulu (4" heel) and **Romy** (3½" heel) are criss-cross ankle strap versions of our popular Rossi and Lola styles. They feature our genuine leather flex sole and perlatto color leather sock lining.

Sizes: 3½ through 12,
B (medium) width only

Sizes 10 & under \$99
Sizes over 10 \$109

Heel Height & Color Chart		
Style	Heel Height	Colors
Lori	4-inch	Black Kid, Black Patent
Rosa	3½-inch	Black Kid, Black Patent
Gina	1-inch	Black Kid, Black Patent
Lulu	4-inch	Black Kid, Black Patent, Red Kid, Red Patent
Romy	3½-inch	Black Kid, Black Patent

NEW! The Latest Styles from Pepe Jimenez

Lily & Ruby



Lily

Lily (4" heel) and **Ruby** (3½" heel) are single ankle strap versions of our wildly popular Lulu and Romy styles. They feature the same low-cut vamp, genuine leather flex sole and perlatto color leather sock lining.

Sizes: 3½ through 12,
B (medium) width only

Sizes 10 & under \$99
 Sizes over 10 \$109

Lena



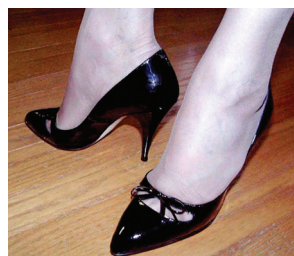
Lena

Lena (4" heel) is a dressier version of the Lori slingback style featuring the same low-cut vamp toebox as the Lori. The sides are open and the straps that hold this airy shoe on your foot are a wisp of nothing.

Sizes: 3½ through 12,
B (medium) width only

Sizes 10 & under \$99
 Sizes over 10 \$109

Luna



Luna

Luna ties up your toe cleavage in a delicate bow. The style features a 4" heel and our genuine leather flex soles.

Sizes: 3½ through 12
B (medium) width only

Sizes 10 & under \$99
 Sizes over 10 \$109

Lara & Roxy



Lara

Lara (4" heel) and **Roxy** (3½" heel) feature sexy open sides and "cut-out" heel cups, our exclusive low-cut vamp, classic thin spike heel, and genuine leather flex-soles for maximum comfort.

Sizes: 3½ through 12,
B (medium) width only

Sizes 10 & under \$99
 Sizes over 10 \$109

Laura



Laura

Laura (4" heel) is a strappy variation of our popular Lily style. It features the same toebox and vamp cut as the Lily but encases your heel in straps rather than a heel cup.

Sizes: 3½ through 12,
B (medium) width only

Sizes 10 & under \$99
 Sizes over 10 \$109

Heel Height & Color Chart		
Style	Heel Height	Colors
<i>Lily</i>	4-inch	Black Kid, Black Patent
<i>Ruby</i>	3½-inch	Black Kid, Black Patent
<i>Lara</i>	4-inch	Black Kid, Black Patent
<i>Roxy</i>	3½-inch	Black Kid, Black Patent
<i>Lena</i>	4-inch	Black Patent, Red Patent
<i>Laura</i>	4-inch	Black Patent, Gold, Red Patent, White Patent
<i>Luna</i>	4-inch	Black Kid, Black Patent

Questions?

Call us from 9 AM to 5 PM CT

630-385-2047

Fax us 24 hours a day

630-385-2056

Visit our Web site

<http://www.classicpumps.com>

Bargain Hunter?

Check our website for sample shoes—Brand new, top quality, and made of grade A leather, but not exactly what we were looking for. (These shoes are sold as-is and may not be returned for any reason.)

We also have some specials from our standard style collection that are unique in that they are not currently stock colors. Check our website for styles, sizes, and colors:

<http://www.classicpumps.com>

More Classic Pumps by Pepe Jimenez

Rossi II



Rossi II

If you love our classic Rossi style but are looking for a lower heel height, **Rossi II** (3" heel) is for you. The shoe features a slightly curvy 3" heel that tapers to ½" at the heel base, our signature low-cut vamp, and genuine leather flex soles.

Sizes: 3½ through 12,
B (medium) width only

Sizes 10 & under \$95
Sizes over 10 \$105

Linda & Roma



Roma

Our **Linda** (4" heel) and **Roma** (3½" heel) styles feature a bias-cut variation of our exclusive low-cut vamp. Both styles have leather soles and leather sock lining.

Sizes: 3½ through 12,
B (medium) width only

Sizes 10 & under \$99
Sizes over 10 \$109

Lisa



Lisa

Lisa features a sexy transparent "see thru" vamp, with toe, heel and slim ankle strap in beautiful black patent leather, and a 4" spike heel. The genuine leather flex sole assures maximum walking comfort.

Sizes: 3½ through 12,
B (medium) width only

Sizes 10 & under \$99
Sizes over 10 \$109

Loni & Roni



Loni

Loni (4" heel) and **Roni** (3½" heel) feature a sexy transparent "see thru" vamp. The heel and toe are genuine black patent leather, and both styles have leather flex soles for maximum walking comfort.

Sizes: 3½ through 12, B (medium) width only
Sizes 10 & under \$95
Sizes over 10 \$105

Lacy & Rita



Rita

Lacy (4" heel) and **Rita** (3½" heel) are styled with revealing, strategically-placed cut outs on the toes and sides of the shoe. Both shoes feature our exclusive low-cut vamp and genuine leather flex soles.

Sizes: 3½ through 12,
B (medium) width only

Sizes 10 & under \$95
Sizes over 10 \$105

Lucy & Ronda



Lucy

Lucy (4" heel) and **Ronda** (3½" heel) feature a sexy tapered version of our low-cut vamp that reveals a bit more of the sides of your feet. Both styles feature our genuine leather flex soles for extra comfort when you walk.

Sizes: 3½ through 12, B (medium) width only
Sizes 10 & under \$95
Sizes over 10 \$105

Heel Height & Color Chart		
Style	Heel Height	Colors
<i>Rossi II</i>	3-inch	Black Kid, Black Patent
<i>Linda</i>	4-inch	Black Kid, Black Patent, Red Kid
<i>Roma</i>	3½-inch	Black Kid, Black Patent
<i>Lisa</i>	4-inch	Black Patent
<i>Loni</i>	4-inch	Black Patent
<i>Roni</i>	3½-inch	Black Patent
<i>Lacy</i>	4-inch	Black Kid, Black Patent
<i>Rita</i>	3½-inch	Black Kid, Black Patent
<i>Lucy</i>	4-inch	Black Kid, Black Patent
<i>Ronda</i>	3½-inch	Black Kid, Black Patent

F.Y.I.

Need your Classic Pumps dyed? Need a heel tip, heel or sole replaced or just want to keep your Classic Pumps in tip-top shape? **B. Nelson Shoes** are masters of high-grade shoe repair. Check out their website at
<http://www.bnelsonshoes.com>
or call 800-750-7669.

Handbags



Handbag styles may vary slightly season to season from those pictured.

Classic Pumps offers handbags designed to match our classic shoes. The *Californian*, made from genuine lambskin leather, is fully fabric lined, has an inside wall zipper, magnetic snap closure, and a versatile 21" shoulder strap that can be tucked into the purse.

Colors: Black, Bone, Chocolate Brown, Dark Green, Navy, Red, Royal Blue, Taupe, White and Wine; also genuine Black Patent Leather.

- Lambskin leather, size: 9" x 6" x 2" \$39
- Lambskin leather, sizes 11" x 5½" x 2½"
- or 8½"x 8½" x 2¼" \$49
- Patent leather, size 11" x 5½" x 2½" \$79
- Colors: Black, red, white

Travel Bags

Our expertly constructed leather bags have the same look, texture, and aroma as designer bags at a fraction of the cost.

Note: Travel bags are available in black leather only.

Duffel Bag



Our cowhide duffel bag features top dual zip opening, front and rear zip pockets, plus two side zippered compartments. Other features include an adjustable shoulder strap and cardboard base.

- Size: 11" x 11" x 20" \$69
- Size: 24" x 12" x 12" \$79

*Purchase a handbag
or travel bag with a
pair of shoes and get a
10% discount off the
price of the bag!*

Comfort Accessories

Dress Fits



Dress Fits by Superfeet are designed especially for women's pumps with heels of 2½" or higher. Dress Fits relieve pressure and support your foot arch, giving your feet the support they need in high heels. Unlike some soft inserts that can actually cause foot fatigue, Dress Fits' patented shape reduces toe "pinching" and crowding. Dress Fits can be moved from one pair of shoes to another.

- Dress Fits come in black, one pair per package. Specify shoe size when ordering.
- Sizes 3½ through 12 \$18/pair

Dainty Footings™ Ball-of-foot Cushions

Dainty Footings™ are shock absorbing shoe cushions specifically designed for women who love wearing Classic Pumps but



would like additional comfort. The cushions reduce shock to your feet and joints, stop foot and toe slippage, help prevent the formation of blisters and calluses, and keep feet cool and dry. Their thin dainty design won't affect the size of your shoes and they're invisible when worn with your Classic Pumps.

These cushions are unique in that they are made with PORON® which is superior to gel cushions. PORON is the number one shock absorbing insole material available. It absorbs impact better than latex foam, rubber, gels and neoprene. PORON is breathable, odorless, non-sensitizing and won't "bottom out" after repeated wearings. Dainty Footings cushions are made with 100% PORON and Dainty Footings products are made in the USA!

One size fits all. They are designed to be installed and left in a pair of shoes. Moving them from one pair of shoes to another is not recommended.

\$7.00/pair (Ask us about our multiple pair discount offer.)

Before you order . . .

Please Consider the Design of Our Shoes

At Classic Pumps, most of our styles feature a low-cut vamp that will show your toe cleavage. If you prefer little or none of your toe cleavage to show, then you should try either the *Anna* or *Bella* styles.

Foot Deformities

If you suffer from any foot deformities, such as severe bunions or hammertoes, our shoes will be uncomfortable for you—guaranteed!

Knowing the Correct Width is Essential for Comfort

If it's been a while since you've had your feet professionally measured for size, we urge you to do so before ordering. Many people need a wider width than B and don't know it. If you need a width wider than B, try our Lola/Rossi style in a C width.

Heel Height Measurements

To compare the heel height of our shoes with those that you currently own, place a shoe on a flat surface and hold a ruler against the back of the heel. The *Lola*, *Lulu* and *Anna* styles will measure 4" using this method with a size 7½ shoe.

Custom Color Orders

You can now custom order any of our styles in any of the colors that our most popular style, Lola, comes in. These colors include any of the following: Aqua, Black Crocodile Print, Black Suede, Bone, Chocolate Brown, Dark Green, Dark Gray, Fuchsia, Gold, Lemon, Navy, Olive, Orange, Pastel Pink, Purple, Red, Red Patent, Royal Blue, Silver, Light Taupe, White, White Patent, and Wine.

Here's how the custom color ordering works:

- * Add \$25.00 to our regular price of the shoes that you are ordering. For example, a custom color Nany style is \$110. A custom color Lily style is \$114.00.
- * Allow 75 to 90 days from the date of your order to receive the shoes.
- * You will be charged 50% of the price at the time of order.
- * The balance, including shipping, will be charged when the shoes are shipped.
- * Once an order is placed, it cannot be cancelled and the shoes cannot be returned for any reason once you receive them.

Custom orders are only accepted from existing customers who know their correct Classic Pumps size.



International Customers

If you are unfamiliar with U.S. shoe sizes, provide us with your country name and your shoe size, and we'll try to match it.

Frequent Purchase Program

For every 6th pair of Classic Pumps or 6th handbag purchased, you automatically receive a 25% discount.

Corporate & Volume Purchase Inquiries

Please call us with your specific needs.

Questions?

Call us from 9 AM to 5 PM CT

630-385-2047

Fax us 24 hours a day

630-385-2056

Visit our web site

<http://www.classicpumps.com>

Ordering Information

Shipping & Handling (Subject to Change)

1-2 pair \$14.00
Each additional pair \$2.00

Shipping via UPS ground service unless otherwise specified. Federal Express expedited shipping is also available. Please contact us for rates.

Outside Continental U.S.

Contact us for preferred shipper and current rates.

Returns & Exchanges

Return unworn shoes in their original box within 30 days of purchase. Include instructions for refund or exchange. Shipping will be paid on return exchanges in the continental U.S. Please allow 21 days for delivery of your order if paying by personal check. **Shipping and handling charges are not refundable.**

Shoes returned for refund after 30 days from date of purchase are subject to a 20% restocking fee to be deducted from the refund.

PRICES AND SHIPPING SUBJECT TO CHANGE WITHOUT NOTICE.

Classic Pumps

1825 Candleberry Lane
Yorkville, IL 60560 U.S.A.
Phone: (630) 385-2047
Fax: (630) 385-2056

Date _____
Name _____
Address _____
City _____ State _____ Zip _____
Home phone () _____
Work phone/ext. () _____
Fax () _____

If you have specific instructions for shipping (no Classic Pumps label, plain box, ship to P.O. box, etc.) please include them in the space provided.

8/08

SHIP TO (if different from CUSTOMER)

Name _____
Address _____
City _____ State _____ Zip _____
Residence ☐ Business ☐

CREDIT CARD BILL TO (if different from SHIP TO or CUSTOMER)

Name _____
Address _____
City _____ State _____ Zip _____

SPECIAL SHIPPING INSTRUCTIONS

	QTY.	STYLE NAME	COLOR	SIZE	PRICE
1st Item					
Alternate Choice					
2nd Item					
Alternate Choice					
3rd Item					
Alternate Choice					
4th Item					
Alternate Choice					
Handbags/ Travel Bags					

☐ I have enclosed a check or money order in the amount of _____

☐ VISA ☐ MasterCard ☐ American Express

CARD NUMBER

EXPIRATION DATE

Signature required if using credit card

IL residents add
6.75% sales tax

CCV digits: _____

VISA/MC: Back of card, last 3
digits in signature area.

AMEX: Front of card, 4-digit
number in upper right corner.

Shipping/Handling
(See Order
Information)

TOTAL

www.classicpumps.com

Repe Jimenez & Sergio Zelcer.

Spain by world renowned shoe designers

in classic styles, custom manufactured in

Beautiful, sexy, high-heeled leather pumps

Simplicity, Elegance & Comfort

Classic Pumps

Classic Pumps

1825 Candleberry Lane
Yorkville, IL 60560 U.S.A.

Our Customers Say It Best

"I just got my new Rossi shoes in this morning and they are a dream come true! I have been searching for the perfect pump for several years and my boyfriend found Classic Pumps for me on-line. . . . I just turned 40 this April and have been searching for something that made me feel feminine and sexy. Your pumps are wonderful. I can't wait for my next order to come in!" Foster City, CA

"I've purchased heels from Classic Pumps since 1995 and they are the sexiest shoes I wear. . . . I'm constantly asked how I wear high heels—it's the comfort!! As far as the fashion, I don't want to buy what everyone else is wearing. These shoes get LOOKED AT. . . . I'm a completely satisfied customer." Reading, PA

"In the past I have purchased several pairs of your wonderful shoes for my wife and I still get a special thrill everytime she puts on a pair. . . . Thanks for keeping beautiful shoes in the forefront. I will be a loyal customer forever!!" Dallas, TX

"As a person who leaves a larger than average footprint, finding fashionable, good looking shoes is not easy. But then I found Classic Pumps and I've been a loyal customer since 1997! Not all shoes look great in the larger sizes, but my Classic Pumps in size 12 are just as pretty to me as those in a size 7. The all-leather quality is outstanding and the shoes are comfortable all day long!" Raleigh, NC